



ALUMINIUM
FOR THE PERFECT FINISH

THE PREMIER SOURCE FOR SOLAR ROOF MOUNTING SYSTEMS



**GUIDE FOR
SOLAR ROOF MOUNTING SYSTEM**

CHARACTERISTICS OF ALUMINIUM

- Non corrosive
- Lightweight yet durable
- Non magnetic
- Good heat and electrical conductor
- Alloy formability
- Machinability
- Recyclability

THE ECO-FRIENDLY METAL

Aluminium is one of the top environmentally-friendly metals widely used in various industries. This eco-friendly metal is the most recyclable industrial material, retaining its mechanical and physical characteristics even after multiple recycling cycles. In fact, aluminium can be recycled indefinitely! Over the past century, the world has produced 1 billion tons of aluminium, and still, 75% of that production remains in use today. Why? Because aluminium is a highly recyclable metal, requiring only 5% of the energy needed for its initial production from raw materials.

ALUMINIUM IS THE METAL FOR THE FUTURE!





SWISSTEK SOLAR ROOF MOUNTING SYSTEM

As a reliable manufacturer of solar roof mounting systems, Swisstek provides a diverse range of roof mount solutions to meet your requirements. All our roof mount products are made of high-quality aluminium alloys, ensuring outstanding system performance and reliability. With our team's extensive knowledge in the industry, we prioritize real-world application, guaranteeing that all our products adhere to stringent international standards. What makes our roof mounts the best choice in the market? We use only high-end aluminium alloys and materials that resist corrosion. While you enjoy the durability of our long-lasting components, you also benefit from the competitive pricing of our roof mount systems.

OUR CERTIFICATIONS

At Swisstek Aluminium we use superior quality aluminium billets which are then processed to produce value added aluminium products to meet the highest quality standards both locally and internationally



SWISSTEK SOLAR ROOF MOUNTING SYSTEM SPECIFICATIONS & FEATURES



SPECIFICATIONS

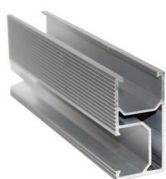
- Material – Aluminium 6063-T5 (For structure)
- Stainless Steel 304 (For Fasteners)
- Mounting Types – Portrait & landscape
- Applicable Sites – Roofs with asbestos, steel corrugated sheets, or roof tiles.
- Wind Load – Up to 60m/s
- Roof Clearance- Customizable
- Warranty – 10 Years

FEATURES

- Fast installation
- Wide purlin spacing minimizes the need for clamps and bases
- Designed to withstand high winds.
- Verified through finite element analysis and failure testing.

SWISSTEK SOLAR ROOF MOUNTING PROFILE DETAILS

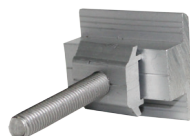
Solar Rail



Serrated Angle Clamp



Mid Clamp



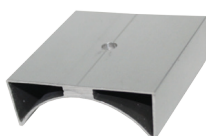
End Clamp



Rail Connector



Asbestos Roof Mounting Base



Zn/Al Roof Mounting Base



Trapezoid Roof Mounting Base



Extended Serrated Angle



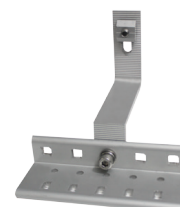
Trapezoid Serrated Angle



Height Adjustable Plate



Adjustable Tile Hook



Hanger Bolt



Lock Nut

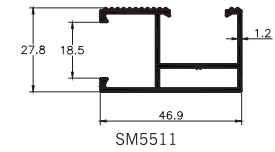
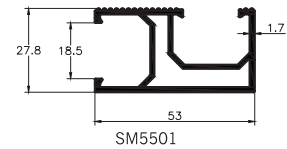


SOLAR RAIL



Available Length	Product Code
4200 mm (14ft) (SM-5501)	AASM5501N000N1400
6100 mm (20ft) (SM-5501)	AASM5501N000N2000
4200 mm (14ft) (SM-5511)	AASM5511N000N1400
6100 mm (20ft) (SM-5511)	AASM5511N000N2000

Material Aluminium Alloy 6063
Temper T5
Anodized Aluminium

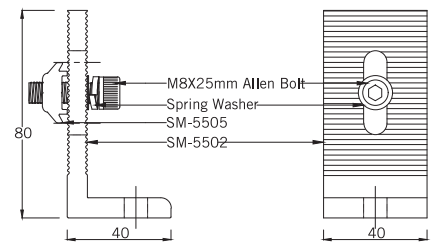


SERRATED ANGLE CLAMP



Available types	Product Code
Serrated Angle 6 Ø	FASM5001N000N0006
Serrated Angle 9 Ø	FASM5001N000N0009
Serrated Angle 10 Ø	FASM5001N000N0010

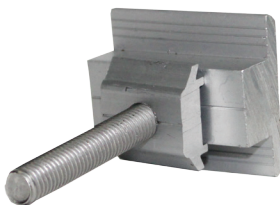
Material Aluminium Alloy 6063
Temper T5
Allen Bolt SS304



Front Elevation

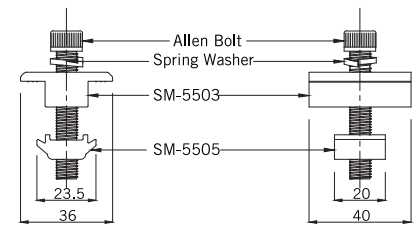
Side Elevation

MID CLAMP



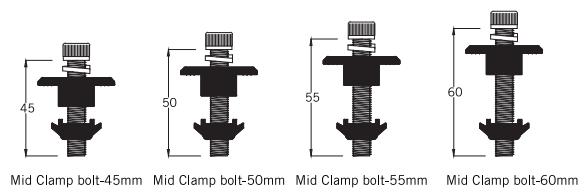
Available Types	Product Code
Mid Clamp Bolt - 45mm	FASM5002N000N0045
Mid Clamp Bolt - 50mm	FASM5002N000N0050
Mid Clamp Bolt - 55mm	FASM5002N000N0055
Mid Clamp Bolt - 60mm	FASM5002N000N0060

Material Aluminium Alloy 6063
Temper T5
Allen Bolt SS304



Front Elevation

Side Elevation

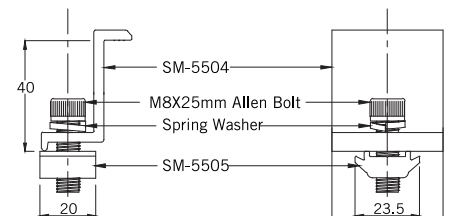


END CLAMP



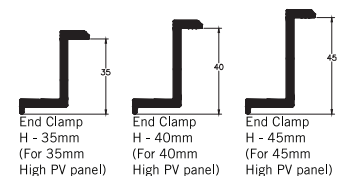
Available Types	Product Code
End Clamp H - 30mm	FASM5003N000N0030
End Clamp H - 35mm	FASM5003N000N0035
End Clamp H - 40mm	FASM5003N000N0040
End Clamp H - 45mm	FASM5003N000N0045

Material Aluminium Alloy 6063
Temper T5
Allen Bolt SS304

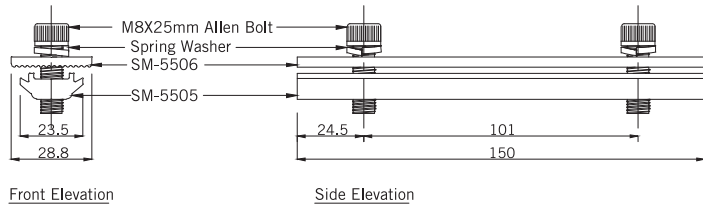


Front Elevation

Side Elevation



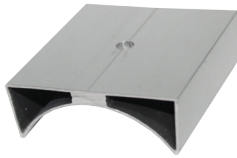
RAIL CONNECTOR



Product Code FASM5004N000N0150

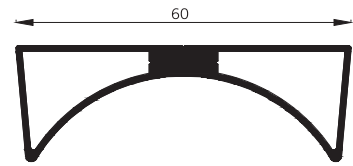
Material Aluminium Alloy 6063
Temper T5
Allen Bolt SS304

ASBESTOS ROOF MOUNTING BASE

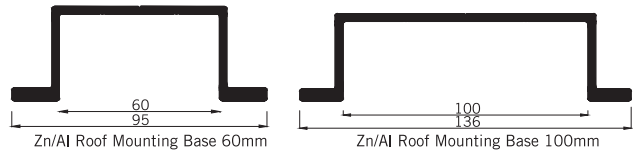


Product Code FASM5005N000N0600

Material Aluminium Alloy 6063
Temper T5



ZN/AL ROOF MOUNTING BASE



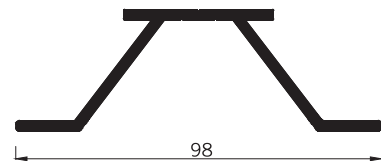
Available types	Product Code
Zn/Al Roof Mounting Base 60mm	FASM5006N000N0060
Zn/Al Roof Mounting Base 100mm	FASM5007N000N0100

Material Aluminium Alloy 6063
Temper T5

TRAPEZOID ROOF MOUNTING BASE



Product Code FASM5008N000N0040
Material Aluminium Alloy 6063
Temper T5

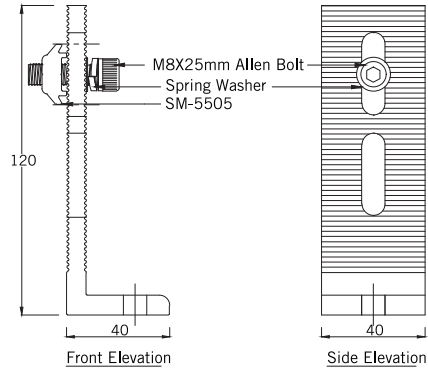


EXTENDED SERRATED ANGLE



Available types Product Code
 Extended Serrated Angle 6 Ø FASM5009N000N0006
 Extended Serrated Angle 9 Ø FASM5009N000N0009
 Extended Serrated Angle 10 Ø FASM5009N000N0010

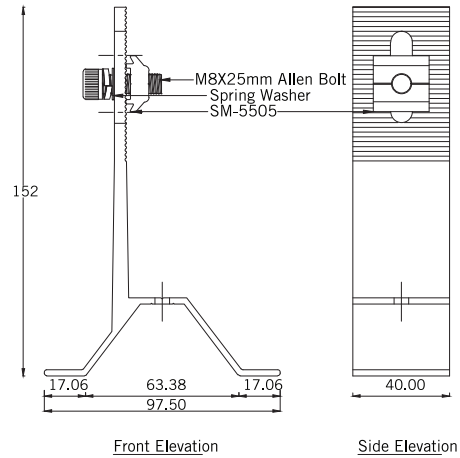
Material Aluminium Alloy 6063
 Temper T5
 Allen Bolt SS304



TRAPEZOID SERRATED ANGLE

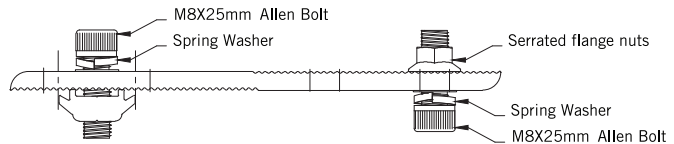


Product Code FASM5010N000N0009
 Material Aluminium Alloy 6063
 Temper T5
 Allen Bolt SS304



HEIGHT ADJUSTABLE PLATE

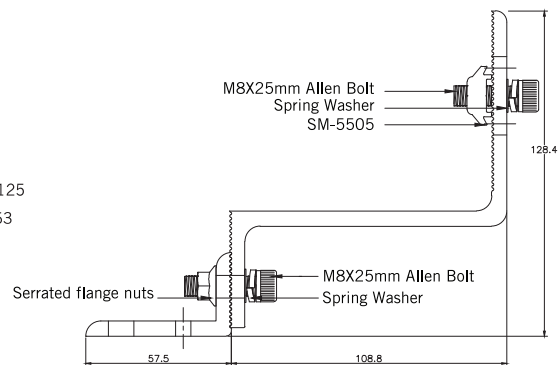
Product Code FASM5011N000N0150
 Material Aluminium Alloy 6063
 Temper T5
 Allen Bolt SS304



ADJUSTABLE TILE HOOK



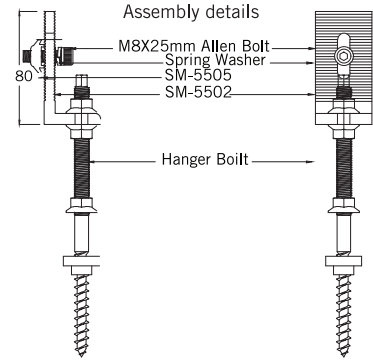
Product Code FASM5013N000N0125
 Material Aluminium Alloy 6063
 Temper T5
 Allen Bolt SS304



HANGER BOLT



Product Code TASM50001N000N0200
 Material Allen Bolt SS304
 Waterproof EPDM rubber sealer



LOCK NUT

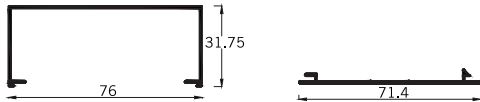


Available types Lock Nut
 Lock Nut - Without Allen Bolt
 Product Code FASM5012N000N0020
 FASM5014N000N0020

Material Aluminium Alloy 6063
 Temper T5
 Allen Bolt SS304

CABLE TRUNKING

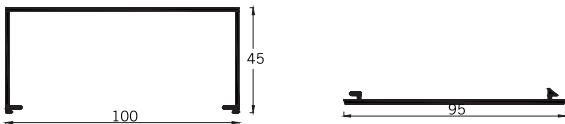
CABLE TRUNKING 76MM



Profile Number SF-7604
 Material Anodized Aluminium
 Aluminium Alloy 6063
 Temper T5
 Available Length 6100mm

Profile Number SF-7605
 Material Anodized Aluminium
 Aluminium Alloy 6063
 Temper T5
 Available Length 6100mm

CABLE TRUNKING 100MM



Profile Number SF-1007
 Material Anodized Aluminium
 Aluminium Alloy 6063
 Temper T5
 Available Length 6100mm

Profile Number SF-1008
 Material Anodized Aluminium
 Aluminium Alloy 6063
 Temper T5
 Available Length 6100mm



ALUMINIUM
FOR THE PERFECT FINISH

Swisstek Aluminium Limited

Reality Centre : No. 23, Narahenpita Road, Nawala, Sri Lanka.

Factory : No. 76/7, Pahala Dompe, Dompe, Sri Lanka.

Tel : +94 11 780 7000

Fax : +94 11 280 6215

E-mail: sales@swisstekaluminium.com

Website: www.swisstekaluminium.com